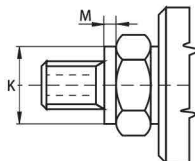
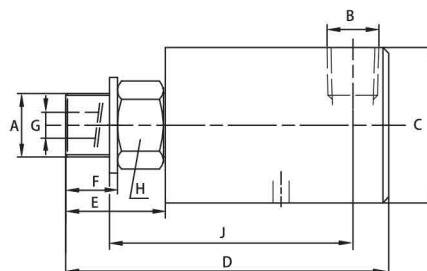


GA 型旋转接头



带导向的转轴



型号	A	B	C	D	E	F	G	H	J	K (mm)	M	重量 (kg)	
GA003002503	M10 X 1	RH	1/8" NPT	1.22	2.83	0.87	0.43	0.13	0.67	2.13	-	-	0.15
GA003002505	M10 X 1	RH	1/8" NPT	1.22	2.83	0.87	0.43	0.13	0.67	2.13	11 ⁰ _{-0.011}	0.12	0.15
GA003002504	G 1/4" (BSP)	RH	1/8" NPT	1.22	2.83	0.87	0.51	0.13	0.67	2.05	-	-	0.15
GA006015830	1/4" NPT	RH	1/4" NPT	1.54	3.23	1.02	0.67	0.25	0.87	2.28	-	-	0.5
GA006000594	5/8" - 18 UNF	RH	1/4" NPT	1.54	3.19	0.98	0.63	0.25	0.87	2.28	-	-	0.5
GA006003592	5/8" - 18 UNF	LH	1/4" NPT	1.54	3.19	0.98	0.63	0.25	0.87	2.28	-	-	0.5
GA006002506	G 1/4" (BSP)	RH	1/4" NPT	1.54	3.19	0.98	0.51	0.25	0.87	2.40	-	-	0.5
GA006002507	G 1/4" (BSP)	LH	1/4" NPT	1.54	3.19	0.98	0.51	0.25	0.87	2.40	-	-	0.5
GA009015831	3/8" NPT	RH	3/8" NPT	1.73	3.98	1.06	0.67	0.33	0.87	2.85	-	-	0.5
GA009002510	5/8" - 18 UNF	RH	3/8" NPT	1.73	3.94	1.02	0.63	0.33	0.87	2.85	-	-	0.5
GA009003594	5/8" - 18 UNF	LH	3/8" NPT	1.73	3.94	1.02	0.63	0.33	0.87	2.85	-	-	0.5
GA009000601	G 3/8" (BSP)	RH	3/8" NPT	1.73	3.94	1.02	0.63	0.33	0.87	2.85	-	-	0.5
GA009003593	G 3/8" (BSP)	LH	3/8" NPT	1.73	3.94	1.02	0.63	0.33	0.87	2.85	-	-	0.5
GA009001590	M16 X 2	RH	3/8" NPT	1.73	3.94	1.02	0.63	0.33	0.87	2.85	-	-	0.5
GA012015832	1/2" NPT	RH	1/2" NPT	2.32	4.65	1.46	0.87	0.51	1.42	3.39	-	-	0.7
GA012001248	3/4" - 16 UNF	RH	1/2" NPT	2.32	4.53	1.34	0.75	0.51	1.42	3.39	-	-	0.7
GA012003596	3/4" - 16 UNF	LH	1/2" NPT	2.32	4.53	1.34	0.75	0.51	1.42	3.39	-	-	0.7
GA012002217	G 1/2" (BSP)	RH	1/2" NPT	2.32	4.53	1.34	0.75	0.51	1.42	3.39	-	-	0.7
GA012003597	G 1/2" (BSP)	LH	1/2" NPT	2.32	4.53	1.34	0.75	0.51	1.42	3.39	-	-	0.7
GA012002316	G 3/4" (BSP)	RH	1/2" NPT	2.32	4.53	1.34	0.75	0.51	1.42	3.39	-	-	0.7
GA012003598	G 3/4" (BSP)	LH	1/2" NPT	2.32	4.53	1.34	0.75	0.51	1.42	3.39	-	-	0.7
GA012003595	M20 X 1.5	RH	1/2" NPT	2.32	4.53	1.34	0.75	0.51	1.42	3.39	22 ^{-0.007} _{-0.020}	0.20	0.7
GA012003599	M20 X 1.5	LH	1/2" NPT	2.32	4.53	1.34	0.75	0.51	1.42	3.39	22 ^{-0.007} _{-0.020}	0.20	0.7
GA012002431	M22 X 1.5	RH	1/2" NPT	2.32	4.53	1.34	0.75	0.51	1.42	3.39	27 ^{-0.007} _{-0.020}	0.12	0.7
GA012003600	M22 X 1.5	LH	1/2" NPT	2.32	4.53	1.34	0.75	0.51	1.42	3.39	27 ^{-0.007} _{-0.020}	0.12	0.7

介质	压力 (bar)	温度 (°C)	转速 (RPM)	转速 (RPM带导向)
空气	10	121	1,500	1,500
冷却液	70	121	3,500	6,000
液压油	105	121	3,500	6,000

特点和优势

- ▶ 精密球轴承，无需润滑
- ▶ 硬化的的不锈钢转轴
- ▶ 优化的平衡式密封，使摩擦力降到最小
- ▶ 平稳运转，无振动
- ▶ 铝制或黄铜壳体
- ▶ 静环有石墨、青铜不同材质以满足不同工况